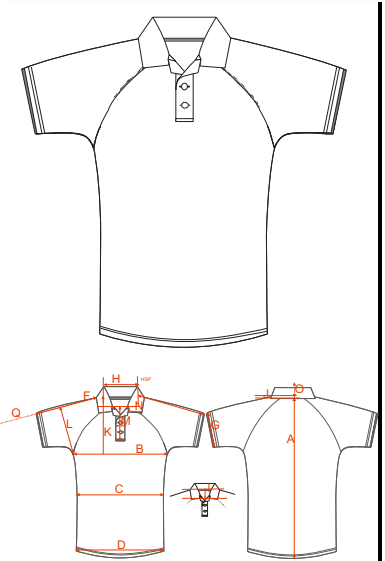


<b>SPECIFICATION CODE</b>	FOR-013	<b>Description</b>	Mens Polo, Raglan
<b>Sample Size</b>	LARGE	<b>Date last amended</b>	25.07.2013



All garments are measured ON THE HALF, FLAT, RELAXED and include Ribbing, binding and waisband unless otherwise indicated.

REF	Sizes	XS	S	M	L	XL	2XL	3XL	4XL	5XL	6XL	7XL	8XL	9XL	GRADE	TOL	SAMPLE MEAS	Variance
A	CB length (if no back drop hem)	69	71	73	<b>75</b>	77	79	81	83	85	87	89	91	93	2	+/- 1		-75
A	CB length (with back drop hem)	71	73	75	<b>77</b>	79	81	83	85	87	89	91	93	95	2	+/- 1		-77
	Distance from front hem to back hem (if with drop back hem)	3	3	3	<b>3</b>	3	3	3	3	3	3	3	3	3				
B	Chest width 1/2	52.5	55	57.5	<b>60</b>	62.5	65	67.5	70	72.5	75	77.5	80	82.5	2.5	+/- 1		-60
C	Waist width 1/2	48.5	51	53.5	<b>56</b>	58.5	61	63.5	66	68.5	71	73.5	76	78.5	2.5	+/- 1		-56
D	Hem width 1/2	50.5	53	55.5	<b>58</b>	60.5	63	65.5	68	70.5	73	75.5	78	78.5	2.5	+/- 1		-58
F	Sleeve Length from HSP	38	39	40	<b>41</b>	42	43	44	45	46	47	48	49	50	1	+/- 1		-41
G	Sleeve Opening 1/2 (no rib)	16.75	17.5	18.25	<b>19</b>	19.75	20.5	21.25	22	22.75	23.5	24.25	25	25.75	0.75	+/- 1		-19
G	Sleeve Opening 1/2 (with rib)	14.75	15.5	16.25	<b>17</b>	17.75	18.5	19.25	20	20.75	21.5	22.25	23	23.75	0.75	+/- 1		-17
H	Neck width	17.5	18	18.5	<b>19</b>	19.5	20	20.5	21	21.5	22	22.5	23	23.5	0.5	+/- 0.5		-19
I	front neck drop	9	9.5	9.5	<b>10</b>	10	10.5	10.5	11	11	11.5	11.5	12	12	0.5	+/- 0.5		-10
J	Back neck drop	2.5	2.5	2.5	<b>2.5</b>	2.5	2.5	2.5	2.5	2.5	2.5	2.5	2.5	2.5	0	+/- 1		-2.5
L	1/2 Bicep	21	22	23	<b>24</b>	25	26	27	28	29	30	31	32	33	1	+/- 0.2		-24
M	Placket Length x Width	14x3.5	16 x 3.5	16 x 3.5	<b>16 x 3.5</b>	16 x 3.5	16 x 3.5	16 x 3.5	16 x 3.5	16 x 3.5	16 x 3.5	16 x 3.5	16X3.5	16X3.5	0	+/- 0.5		
N	Collar Peak Length	6.5	6.5	6.5	<b>6.5</b>	6.5	6.5	6.5	6.5	6.5	6.5	6.5	6.5	6.5	0	+/- 0.2		-6.5
O	CB Collar Height (extended)	8	8	8	<b>8</b>	8	8	8	8	8	8	8	8	8	0	+/- 0.5		-8
Q	Long sleeve length from HSP*	76	77.5	79	<b>80.5</b>	82	83.5	85	86.5	88	89.5	91	92.5	94	1.5	+/- 0.5		-80.5
R	Long sleeve cuff width flat (open cuff)	11	11.5	12	<b>12.5</b>	13	13.5	13.5	14	14	14.5	14.5	15	15	0.5	+/- 0.5		-12.5
R	Long sleeve cuff width flat (rib cuff)	9.5	9.5	10	<b>10.5</b>	11	11.5	11.5	12	12	12.5	12.5	13	13	0.5	+/- 0.5		-10.5



<b>Comments</b>																		

<b>SPECIFICATION CODE</b>	FOR-013	<b>Description</b>	Mens Polo, Raglan
<b>Sample Size</b>	LARGE	<b>Date last amended</b>	25.07.2013



**MEASURING GUIDE - FOR MEASURING ONLY REFER TO TECH SHEET FOR PANEL AND STYLING DETAIL**

